



HP LaserJet 9050 printer series

High volume workgroup performance
in a versatile package



Extensive options for enterprise versatility



HP LaserJet 9050 printer series

Get high-performance, high-volume, wide-format (A3) black and white printing in the HP LaserJet 9050 printer series. The versatile paper handling options and advanced networking capability allow you to streamline document production and centralise printing to boost productivity. The HP LaserJet 9050 printer series is truly built to meet the demands of large workgroups and departments.

Utilise advanced options for greater functionality

The HP LaserJet 9050 printer series maximises flexibility with an optional 2,000-sheet high-volume input tray, two-sided printing module¹ and four advanced finishing options:

8-bin mailbox allows individuals, workgroups or departments to be assigned to each bin. Jobs can then be retrieved easily from the respective bin. A sorter/collator, stacker and job separator come standard with the mailbox bin.

Multifunction finisher provides 1,000-sheet stacking capacity, 50-sheet stapling per job and folding and saddle stitching for 10-sheet booklets.

3,000-sheet stacker/stapler provides 3,000-sheet stacking capability along with multi-position stapling for up to 50 sheets per job.

3,000-sheet stacker has stacking capacity for 3,000 sheets of paper, with job offset.

Print on a wider variety of media sizes and types

Complementing the extensive paper handling abilities of the HP LaserJet 9050 printer series is the support for a wide range of media. Print on custom media from JIS B5, to Letter and A4, to Tabloid and A3 sizes, with weights up to 216 gsm on the 100-sheet multipurpose tray² and up to 200 gsm for all other trays. Adjustable paper trays even allow printing up to 1mm from the edge.

Expand printer capabilities with 2 EIO slots

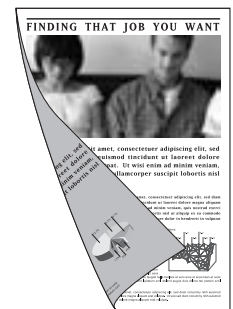
Two EIO slots give the HP LaserJet 9050 printer series even further versatility. These can be used to install

- 20 GB EIO hard disks for additional functions such as Quick Copy and Stored Job
- Gigabit or wireless Jetdirect print servers for high performance sharing
- HP and 3rd party software for form, check and barcode printing

¹ Optional on HP LaserJet 9050 and 9050n Printers, standard on HP LaserJet 9050dn Printer.



A4



A3

Double-sided printing on a variety of media



8-bin mailbox



Multifunction finisher

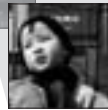


Stapler/stacker



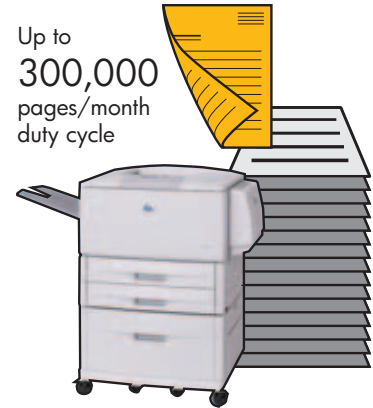
Stacker

Print technology and innovation for enhanced performance



Sharper image with
HP FastRes 1200

HP Smart printing technology and HP FastRes 1200 produce razor sharp prints



300,000 pages a month—tough enough to take on departmental workloads

Keep productivity high with fast prints

To meet demanding business requirements, the HP LaserJet 9050 printer series provides fast, robust performance. A swift print speed of 50 pages per minute and fast first page out under 8 seconds¹, reduces the time required for print jobs to be done.

Speed through complex print jobs

Print highly complex documents fast, thanks to the advanced 533 MHz processor, with up to 128 MB DDR SDRAM² (upgradeable to 512 MB) and RIP-once technology. HP PCL 6 support gives optimum performance, while HP PCL 5e provides backward compatibility and HP Postscript level 3 emulation handles postscript jobs. Automatic language switching ensures that the best language is used.

And with HP FastRes 1200 printing technology, optimal print speed is realised when rendering 600 x 600 dpi prints.

Handle heavy network and print loads easily

A robust 300,000 pages per month duty cycle handles heavy printing jobs easily, and the HP Jetdirect Fast Ethernet embedded print server³ can process incoming print data at 4.5 MB per second, increasing print efficiency and reducing network congestion.

¹ Exact speed depends on system configuration, software programs and document complexity.

² HP LaserJet 9050 Printer comes standard with 64 MB of DDR SDRAM. HP LaserJet 9050n and 9050dn Printers come standard with 128 MB of DDR SDRAM.

³ Standard on HP LaserJet 9050n and 9050dn Printers.



HP original LaserJet print cartridge. The science behind brilliant printing.

High tech, high performance

70% of HP LaserJet printing technology is in the cartridge. Smaller, more uniformly shaped HP toner particles deliver richer, sharper blacks and more even tones, so your documents always look their best.

Unmatched reliability

Painstakingly engineered and tested to work perfectly with HP LaserJet printers, you get reliable, consistent print results and peace of mind with HP original LaserJet print cartridges.

Smart management

Access real-time toner usage data stored in the cartridge with HP Smart printing technology and make better purchase decisions.

Services and manageability solutions keep total cost of ownership low



HP printing solutions work together to make maintenance and resupply worry-free

Simplified maintenance

HP Smart Printing Technology simplifies maintenance and maximises uptime by alerting you when supplies are low and enabling convenient online ordering of replacements¹.

Effortless network management

HP Web JetAdmin and HP Embedded Web Server work together to allow remote management of network peripherals, track jobs and send email alerts, simplifying management and saving time and money².

Worry-free installation

In addition, you can opt for installation, network installation and configuration services, maintenance kits and extended warranties for the HP LaserJet 9050 printer series, that further reduce total cost of ownership.

Renowned HP reliability

HP's reliability, backed by a heritage of HP quality and reliable performance, ensures that you maximise return on investment and minimise total cost of ownership. For twelve consecutive years, Hewlett-Packard has consistently received the top grade in the annual PC Magazine™ Service and Reliability Survey and recently received one of the first A+ ratings ever given.

¹ Using genuine HP supplies ensures availability of all HP printing features.

² Only available with an HP Jetdirect print server, standard on HP LaserJet 9050n and 9050dn Printers.



HP Smart supplies simplify maintenance



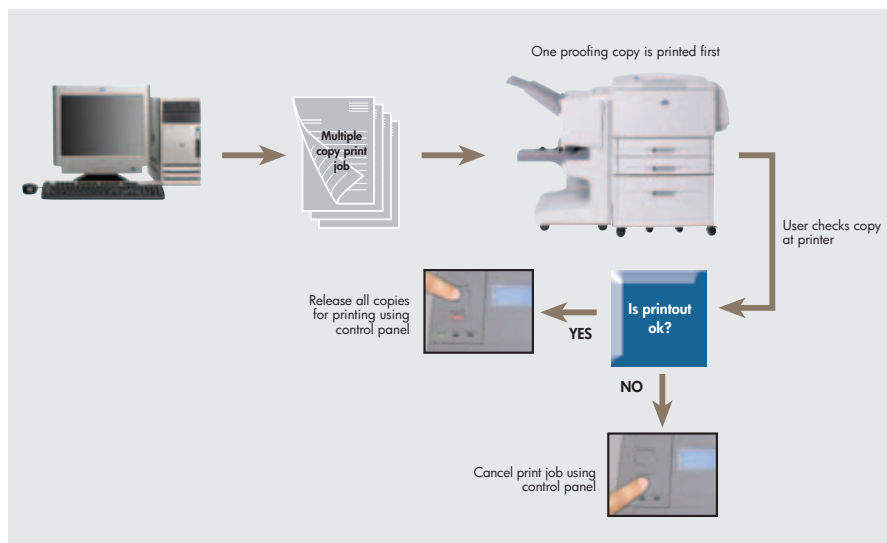
HP Web-based printer management makes things easy



August 5, 2003
OVERALL PRINTERS
Hewlett-Packard Company

HP service and support—award winning assurance

Sophisticated productivity features made easy



Proof and Hold feature reduces wastage and improves productivity

Functions at your fingertips

The HP LaserJet 9050 printer series also comes with an intuitive 10-key LCD control panel, which has a four-line text display to provide up-to-date information on printer and job status.

Process your print jobs the way you want

From the control panel, you can access job retention features like the optional Quick Copy and Stored Job functions¹. The user-friendly control panel is also integral to the Private Job and Proof and Hold functions². The Proof and Hold feature lets users review one copy of a multiple-copy print job before using the control panel to release the remaining copies.

Maintain print confidentiality

For confidentiality in a shared environment, the Private Job feature can prevent a job from executing until you enter a 4-digit personal identification number at the control panel. This ensures that the job only prints when you are there to receive it.

HP worldwide customer service and support:

The HP assurance

For greater peace of mind, every HP product comes with award winning HP service and support³—HP Customer Care. Our highly experienced and knowledgeable customer service professional are there to help you—online (www.hp.com/support) via email or on the phone for fast response—round the clock, round the globe in as many as 18 languages.

HP Pay per use service

HP Pay per use service provides a comprehensive solution that combines the hardware, services, support, supplies and reporting with flexible payment options of level pay, base plus click and cost per page (with minimum). The HP Pay per use service offers our customer cost transparency and budgetary certainty whilst increasing device availability, user satisfaction and productivity.

¹ Available when optional 20 GB EIO hard disk is installed.

² Available when optional 20 GB EIO hard disk is installed, or with at least 128 MB of printer memory, standard on HP LaserJet 9050n and 9050dn Printers.

³ 9 consecutive years—ComputerWorld Reader's Choice Awards.



Access sophisticated features and get status information in one convenient location



9 consecutive years—ComputerWorld Readers' Choice Awards

HP LaserJet 9050 printer series

1. Automatic two-sided printing unit offers fast, efficient duplexing

2. Control panel with 10-key number pad simultaneously displays up to four lines of text and animated graphics

3. 100-sheet multipurpose tray handles heavy custom media up to 216 g/m² or 58 lb bond

4. Adjustable 500-sheet input trays 2 and 3

5. Optional 2,000-sheet input tray 4 delivers high volume printing

6. Bidirectional IEEE-1284-B compliant parallel port

7. 128 MB total memory and a powerful 533 MHz processor perform complex tasks quickly

8. HP Jetdirect Fast Ethernet embedded print server enables networking

9. Optional 8-bin mailbox enables automatic document sorting for individuals and departments



HP LaserJet 9050dn printer shown with optional 2,000-sheet input tray and optional 8-bin mailbox

Versatile design

Add the following optional components to your HP LaserJet 9050 printer series to meet the needs of your business:

- 2,000-sheet input tray for up to 3,100-sheet capacity
- 8-bin mailbox, stacker, stapler/stacker, or multifunction finisher
- Add memory up to 512 MB
- Use the two available EIO slots for an optional HP Jetdirect wireless print server, 20 GB HP high performance EIO hard disk, or HP and third-party software solutions for business functions including form, check and barcode printing

Series at a glance

HP LaserJet 9050

- Two 500-sheet input trays for 1,000-sheet capacity
- 64 MB memory
- Two empty EIO slots

HP LaserJet 9050n

All of the features of the 9050 model plus:

- 100-sheet multipurpose tray for 1,100-sheet capacity
- HP Jetdirect Fast Ethernet embedded print server
- 128 MB total memory

HP LaserJet 9050dn

All of the features of the 9050n model plus:

- Automatic two-sided printing unit



Print speed¹	Up to 50 ppm, letter and A4		
First page out	Approximately 8 seconds		
Resolution	600 x 600 dpi with HP FastRes 1200, Resolution Enhancement technology (REt) and HP Ultraprecise toner		
Processor	533 MHz		
Memory, standard	64 MB DDRAM (two available DIMM slots)	128 MB DDRAM (two available DIMM slots)	
Memory, maximum	512 MB DDRAM		
Duty cycle	Up to 300,000 pages per month		
Media			
Media handling	500-sheet trays 2 and 3	100-sheet multipurpose tray, 500-sheet trays 2 and 3	
Output capacity	600-sheet output bin (500 sheets face down, 100 sheets face up)		
Two-sided printing	Optional automatic two-sided print unit		Automatic two-sided printing unit
Sizes	Multipurpose tray: 98 x 191 to 312 x 470 mm (3.9 x 7.5 to 12.3 x 18.5 inches); letter, legal, tabloid, executive, JPostD (A3, A4, A5, JIS B4, JIS B5) Automatic two-sided printing unit, trays 2, 3 and optional tray 4: 148 x 210 to 297 x 432 mm (5.8 x 8.3 to 11.7 x 17 inches); letter, letter-rotated, legal, tabloid, executive (A3, A4, A4-rotated, A5, JIS B4, JIS B5)		
Weights	Multipurpose tray: 64 to 216 g/m ² (17 to 58 lb); Automatic two-sided printing unit, trays 2, 3 and optional tray 4: 64 to 200 g/m ² (17 to 53 lb)		
Types	Paper (plain, preprinted, letterhead, prepunched, bond, colour, recycled, rough), transparencies, labels, cardstock		
Connectivity			
Interfaces	Bidirectional IEEE-1284-B compliant parallel port, two available EIO slots	Bidirectional IEEE-1284-B compliant parallel port, two available EIO slots, HP Jetdirect Fast Ethernet embedded print server	
Languages	HP PCL 6, HP PCL 5e, HP postscript level 3 emulation, PDF v 1.3 emulation, XHTML-Print v 0.95, HP PJI (Printer Job Language), PML (Printer Management Language)		
Fonts	80 internal TrueType™ fonts scalable in HP PCL and HP postscript level 3 emulation; additional font solutions available via DIMMs		
Client operating systems	Microsoft® Windows 98, Me, NT, 2000, XP, Macintosh OS 9, OS 10		
Network operating systems ²	Via the HP Jetdirect Fast Ethernet embedded print server, HP Jetdirect 680n 802.11b wireless internal print server, en3700 external print server: Microsoft Windows 98, Me, NT 4.0, 2000, XP, XP 64-Bit, Server 2003; Novell NetWare 3.2, 4.2, 5.x, 6.x; Apple Mac OS 8.6 and later; Red Hat Linux 6.x and later; SuSE Linux 6.x and later; HP-UX 10.20, 11.x; Solaris 2.5x, 2.6, 7, 8, 9, 10 (SPARC systems only); IBM AIX 3.2.5 and later; MPE-iX		
Network protocols supported ²	Via the HP Jetdirect Fast Ethernet embedded print server, HP Jetdirect 680n 802.11b wireless internal print server, en3700 external print server: TCP/IP (IP Direct mode; may require software from the NOS vendor or third party vendor: LPD, FTP, IPP), IPX/SPX, DLC/LLC, AppleTalk, Auto-IP, Apple Rendezvous compatible, NDS, Bindery, NCP, Telnet, SLP, IGMP, BOOTP/DHCP, WINS, SNMP (v 1, v 2c, v 3), HTTP		
Dimensions (w x d x h)	991 x 1001 x 600 mm (39 x 42.7 x 23.6 inches)	1397 x 1001 x 600 mm (55 x 42.7 x 23.6 inches)	
Weight	63.5 kg (140 lb)	69.4 kg (153 lb)	76.2 kg (168 lb)

¹ Exact speed depends on system configuration, software programs and document complexity.

² Not all protocol and operating system combinations are supported. For more information, go to: www.hp.com/support/net_printing

HP LaserJet 9050 printer series

Technical specifications

Environmental ranges

Operating temperature Operating: 10 to 32.5° C (150 to 91° F)

Relative humidity 10 to 80 percent relative humidity

Altitude 0 to 3100 m (0 to 10,000 ft)

Acoustics¹

Power: active: 7.2 B(A); standby: 5.6 B(A)
Pressure (bystander): active: 56 dB(A), standby: 40 dB(A)

Power requirements

Input voltage: 110 to 127 V (±10 percent), 50/60 Hz (±2 Hz)
220 to 240 V (±10 percent), 50/60 Hz (±2 Hz)

Power consumption¹

(Energy-saver sleep mode, Energy Star compliant)

	9050	9050n and 9050dn
Maximum:	1000 watts	1000 watts
Standby:	197 watts	205 watts
Powersave:	18 watts	36 watts
Off:	0.7 watts	0.3 watts

Power certifications

EMC: CISPR 22: 1997/EN 55022: 1998 Class B, EN 61000-3-2: 2000, EN 61000-3-3: 1995, EN 55024: 1998, FCC Title 47 CFR, Part 15 Class B/ICES-003, Issue 4/GB9254-1998, GB17625.1-2003, EMC Directive 89/336/EEC and the Low Voltage Directive 73/23/EEC, and carries the CE-Marking accordingly Compliance/Safety: Argentina (TUV S Mark-Rs.92/98/Ds.1009/98), Australia (AS/NZ 3260), Canada (cUL-CAN/CSA C22.2 No. 60950-00), China (GB4943), Czech Republic (CSN-IEC 60950-IEC 60825-1), Estonia (EEI-EN60950-IEC 60825-1), EU (CE Mark-Low Voltage Directive 73/23/EEC), Germany (TUV-EN60950-IEC 60825-1), Hungary (MEEI-IEC 60950-IEC 60825-1), Japan Radio Law, Lithuania (LS-IEC 60950-IEC 60825-1), Mexico (NOM NYCE-NOM 019 SCFI), Poland (B Mark-IEC 60950-IEC60825-1), Russia (GOST-R50377), Slovakia (IEC 60950-IEC60825-1), Slovenia (SQI-IEC 60950 EN60825-1), South Africa (IEC 60950-IEC60825-1), USA (UL-UL 60950, FDA-21 CFR Chapter 1 Subchapter J for lasers); Class 1 laser/LED product

Warranty

One-year, next day, on-site warranty
Warranty varies according to country. Please check with your Hewlett-Packard sales office or your nearest HP authorised dealer for details.

¹ Values subject to change, see www.hp.com/support/lj9050 for current information.

For more information, call your local Hewlett-Packard sales office or your nearest HP authorised dealer or visit us at www.hp.com

HP customer information centre (for product information)

Australia	13 23 47
China	800 820 2255
Hong Kong	800 938 833
India	1600 444 999
Indonesia	0800 1111 222
Korea	080 703 0700
Malaysia	1800 88 4848
New Zealand	0800 733 547
Philippines	1800 1441 6688
Singapore	1800 278 8100
Taiwan	0800 236 686
Thailand	+66 2 353 9000
Vietnam	+84 8 823 6215

HP customer care centre (for post-sales service)

Australia	13 10 47
China	800 810 5959
Hong Kong	+852 3002 8555
India	1600 112 267
Indonesia	+62 21 350 3408
Korea	+82 2 3270 0700
Malaysia	1800 80 5405
New Zealand	+64 9 356 6640
Philippines	+63 2 867 3551
Singapore	+65 6 272 5300
Taiwan	+886 2 8722 8000
Thailand	+662 353 9000
Vietnam	+848 823 4530

For the following countries, please fax your queries to: +65 6275 6707

• Bangladesh • Bhutan • Brunei • Cambodia • Maldives • Nepal • Pakistan • Sri Lanka

Ordering information

Number	Description
Q3721A	HP LaserJet 9050
Q3722A	HP LaserJet 9050n
Q3723A	HP LaserJet 9050dn

Paper handling

Q5693A	8-bin mailbox
C8084A	3,000-sheet output stacker
C8085A	3,000-sheet output stacker/stapler
C8088B	Multifunction finisher
C8531A	2,000-sheet input tray
C8532A	Automatic two-sided printing unit
C8568A	100-sheet multipurpose input tray

Supplies

C8543X	HP LaserJet 9000/9050 series Smart print cartridge (30,000 pages at 5% coverage)
--------	--

Media

C2936A	HP Color LaserJet Transparencies, A4, 50 sheets
Q6542A	HP Soft Glass Laser Paper, A4, 200 sheets
Q1298A	HP LaserJet Tough Paper, A4, 50 sheets
Q6547A	HP Laser Photo Paper, Glossy, A4, 200 sheets
Q6550A	HP Laser Photo Paper, Matt, A4, 100 sheets
Q6548A	HP Laser Photo Paper, Matt, A3, 200 sheets

Print servers

J3258B	HP Jetdirect 170x Ethernet external print server (parallel)
J3263A	HP Jetdirect 300x Fast Ethernet external print server (parallel)
J3265A	HP Jetdirect 500x Fast Ethernet external print server (parallel)
J6035C	HP Jetdirect 175x Ethernet external print server
J6058A	HP Jetdirect 680n 802.11b wireless internal print server
J7934A	HP Jetdirect 620n Fast Ethernet internal print server
J7942A	HP Jetdirect en3700 Fast Ethernet external print server

Memory and storage

J6073A	20 GB HP high-performance EIO hard disk
Q2625A	64 MB DDRAM DIMM
Q2626A	128 MB DDRAM DIMM
Q2627A	256 MB DDRAM DIMM

Cables

92215S	Macintosh printer cable, 2-meter
C2950A	Parallel cable, 2-meter IEEE 1284 (a to b)
C2951A	Parallel cable, 3-meter IEEE 1284 (a to b)

Service and support

H2872A	Installation for 1 Network Configuration for Dept and Color LaserJet printer
H7621A	Installation for 1 Network Configuration for Dept and Color LaserJet printer
H4515A	Installation for 1 Department or Color HP LaserJet Printer (per event)
H7617A	Installation for 1 Department or Color HP LaserJet Printer (per event)
H7599A	Next Business Day Onsite, HW Support, 1.8M pages or 3 year
H7694A	Next Business Day Onsite, HW Support, 3 year
U6409A	Next Business Day Onsite, HW Support, 4 year
H7633PA	Post Warranty Service, 4-Hour, 13 x 5 Onsite, HW Support, 600K pages or 1 year
H7699PA	Post Warranty Service, 4-Hour, 13 x 5 Onsite, HW Support, 1 year
U8013PA	Post Warranty, 4-Hour, 9 x 5 Onsite, HW Support, 600K pages or 1 year
UA922PA	Post Warranty Service, 8-Hour, 9 x 5 Onsite, HW Support, 1 year (AP only)
H7629PA	Post Warranty Service, Next Business Day Onsite, HW Support, 600K pages or 1 year
H7698PA	Post Warranty Service, Next Business Day Onsite, HW Support, 1 year
U4844A	4-Hour, 9 x 5 Onsite, HW Support, 3 year
U8012A	4-Hour, 9 x 5 Onsite, HW Support, 1.8M pages or 3 year
U8050A	4-Hour, 9 x 5 Onsite, HW Support, 1.8M pages or 3 year
H7603A	4-Hour, 13 x 5 Onsite, HW Support, 1.8M pages or 3 year
H7696A	4-Hour, 13 x 5 Onsite, HW Support, 3 year
U9877A	Maintenance Kit Replacement: Fuser, 110 volt, per event
U9878A	Maintenance Kit Replacement: Fuser, 220 volt, per event
U6400PA	Warranty Service, 4-Hour, 9 x 5 Onsite, HW Support, 1 year

Third-party solutions

www.hp.com/go/gsc

For more information on

HP Care Pack, visit: <http://www.hp.com/apac/hpservices/carepack>

HP Instant Support Professional Edition (ISPE), visit: <http://www.instantssupport.asiapac.hp.com>

For more information on support, visit: <http://www.hp.com/support>

For more information on HP genuine parts, visit: <http://www.hp.com/go/hpparts>

For specific warranty details, please check with your local country resellers.



© 2004 Hewlett-Packard Development Company, L.P. The information contained herein is subject to change without notice. The only warranties for HP products and services are set forth in the express warranty statements accompanying such products and services. Nothing herein should be construed as constituting an additional warranty. HP shall not be liable for technical or editorial errors or omissions contained herein.

Printed in Singapore, 2001-3437-EFP, 07/2004

