



print | copy | scan | fax

A compact and intelligent design for optimum office productivity.

50-sheet ADF

Quickly copy, scan and fax multi-page documents up to legal-size.

CCD Scanner

Up to 9600 dpi resolution and supports TWAIN and WIA.

Built-in Duplex Capability

Save on paper costs and produce professional booklet-type documents.

Standard 400-sheet Paper Tray

Requires fewer paper changes. Paper capacity can be expanded to 950 sheets with the optional feeder. Supports up to 216 gsm media on all trays.



250-sheet Output Tray

Perfect for printing long documents.

New Direct Transfer Printing Technology

Ensures high-definition colour printouts even on plain office paper.

Multiple Interfaces

10Base-T/100Base-TX, USB 2.0 and IEEE1284.

Compact, Space-saving Design

Small footprint and single-front door access for easy installation and maintenance.

Enjoy fast and easy access to all machine functions.

Quick access to important functions via Copy, Fax, Scan to E-mail and Scan buttons.

Large LCD displays 4 lines of text and graphics. Shows status messages, menus and toner levels.



One-touch buttons provide access to the first 10 entries in the fax address book.

LED arrows show the fax status and indicate whether sending or receiving is in progress.

Alphanumeric keypad provides easy entry of e-mail addresses, fax numbers and IP addresses for walk-up usage.

Effortless maintenance



Single front door access lets you replace consumables, clear paper jams and perform other maintenance procedures from one easily accessible access point.



print | copy | scan | fax

CONFIGURATIONS	DocuPrint C3290 FS
Speed (A4)	Up to 20 ppm colour/30 ppm monochrome
Maximum Monthly Print Volume	60,000 images/month
Paper Handling	
Input Capacity	Standard: 400 sheets Maximum: 950 sheets
Output Capacity	250 sheets, face down
Two-sided Output	Built in duplex printing
Print	
Technology	Colour Laser
Resolution	600 x 600 dpi; 9600 x 600 dpi (enhanced)
First Page Out Time	17 sec. colour/16 sec. monochrome
Print Language	PCL5c/6, Adobe® PostScript 3
Processor	MIPS 400 MHz + ARM Twin CPU (ARM9 150 MHz x2)
Memory (Std/Max)	256 MB/768 MB
Connectivity	Ethernet (100BASE-TX/10BASE-T), USB 2.0, Parallel
Print Features	Secure Print, Proof Print, Booklet Creation, Poster Printing, N-Up Printing, Watermarks, Overlays
Printer Management/Utilities	CentreWare Internet Services, SimpleMonitor
Copy	
Resolution	Up to 600 x 600 dpi
First Copy Out Time	25 sec. colour/13 sec. monochrome
Reduce/Enlarge	25 - 400%
Multi-copy	1 - 99 pages
Copy Features	N-up Copying, ID Card Copy, Clone, Poster, Collation, Auto-Fit
Scan	
Resolution	600 x 600 dpi (optical); 9600 dpi (interpolated)
Scanner Type	Colour CCD Flatbed / Simplex ADF (50 Sheets)
Depth	Up to 48-bit/RGB (Colour); 32-bit odd/even (Greyscale)
Max Document Size	Legal 14" (ADF), A4 (flatbed)
Scan Destinations	Scan to PC, Scan to Email, Scan to FTP/SMB
File Type	BMP, TIFF, JPEG, PDF, XDW
Fax	
Fax Speed	33.6 Kbps (Super G3)
Transmission Speed	3 seconds/page (monochrome)
Page Memory	Up to 100 jobs or 700 pages
Fax Resolution	Up to 400 x 400 dpi (monochrome), 200 x 200 dpi (colour)
Fax Image	Colour transmission; 256 levels
One-touch/Speed Dials	10/200
Fax Features	Colour Fax, Direct Fax, Delay Start, Broadcast Sending, Junk Fax Filter, Group Fax, Secure Receive

SPECIFICATIONS

Network/Software

Supported Protocols: LPD, Port9100, IPP*, SNMP, HTTP, HTTPS*, DHCP, BOOTP, RARP, AutoIP, WINS*, FTP, AppleTalk*, SMB*, DDNS*, SMTP/POP3, NetWare*, Bonjour (mDNS)*

Printer Management/Utilities: CentreWare Internet Services, SimpleMonitor

Font Capabilities: PCL: 81 fonts and 36 symbol; PS3: 136 fonts

Printer Drivers: Windows 2000/XP/Server 2003/Vista/x64 XP/x64 Server 2003. Mac OS X 10.2.8/10.3.2/10.4

Bundled Software: DocuWorks 6.2 Special Edition, Express Scan Manager, Address Book Editor

* Requires option Network Expansion Card

Paper Handling

Tray 1: 60 to 216 gsm - Plain, Card Stock, Glossy Paper, Transparency, Label, Envelope
Media Size: A4, B5, A5, Letter, Executive, Folio, Legal, Com#10, Monarch, DL, C5, Custom: 76.2-220 mm (W) x 98-335 mm (L)

Tray 2 & 3: 60 to 216 gsm - Plain, Card Stock, Glossy Paper, Label
Media Size: A4, B5, A5, Letter, Executive, Folio, Legal, Custom: 148-215 mm (W) x 210-335 mm (L)

Duplex Printing: 60 to 163 gsm - Plain, Card Stock, Glossy Paper, Label
Media Size: A4, B5, A5, Letter, Executive, Folio, Legal, Custom: 77-220 mm (W) x 127-355 mm (L)

General

Size: 460 x 520 x 730 mm (with ADF)

Weight: 40kg (w/o consumables)

Environment

Temperature & Humidity: Operating: 5 - 32°C, 15/85%RH

Non Operating: -20 - 40°C, 5/85%RH

Noise Level: Standby: 31dBA; Printing: 55dBA

Electrical: 110-127V ±10%, 50Hz±3Hz/60Hz±3Hz, 9A or 220-240V ±10%, 50Hz±3Hz/60Hz±3Hz, 9A

Power Consumption: Average Printing: 464W, Standby: 108W, Sleep: 35W or less

For more information, please contact:



©2007 Fuji Xerox Printers. All rights reserved. Contents of this publication may not be reproduced without permission of Fuji Xerox Printers, Xerox, The Document Company, the stylized X, Phaser, CentreWare® and PhaserSmart® are registered trademarks/trademarks of Xerox Corporation. All other names mentioned are trademarks of their respective companies. The information in this brochure is subject to change without notice. Errors and omissions excepted. Fuji Xerox Printers practice a policy of continued product development, this means that product specifications may incorporate innovations and/or enhancements resulting from ongoing research & development (and may vary from those specified in brochures at time of printing). In keeping with normally accepted commercial practices, the purchaser is advised to both confirm product specifications, and satisfy themselves as to product performance and exact configuration (to suit each particular requirement) before purchase. Fuji Xerox Printers will not accept any liability (product related and/or resulting from product usage) where such due diligence has not been performed and the incorrect product has been purchased.



print | copy | scan | fax



Affordable Business Class Performance

A complete office solution that's fast, full-featured and so easy to use.





Vastly improve office efficiency

with this easy-to-use, high-performance A4 colour multifunction printer.



Fast, beautiful output and great productivity features make the compact new DocuPrint C3290 FS the best choice for small- to medium-size offices and workgroups that demand top performance at an affordable price.

Accelerate office operations

The DocuPrint C3290 FS seamlessly integrates your most common office devices into one speedy and easily networkable unit that vastly improves office efficiency.

Simultaneous operations

Eliminate waiting for machine access. The DocuPrint C3290 FS allows you to copy, fax or scan while other jobs are printing.

Fast output

Print and copy at up to 20 ppm colour and 30 ppm monochrome thanks to the 400 MHz processor and standard 256 MB of RAM.

Fast input

Easily process long, multi-page documents with the 50-sheet ADF. Use it for copying, scanning and faxing documents up to legal-size.

Uninterrupted printing

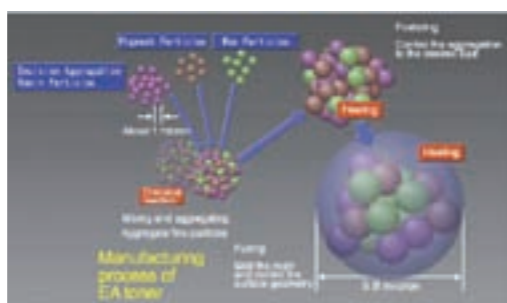
The standard 400-sheet paper capacity keeps your office humming by reducing paper changes. Paper capacity can be expanded to 950 sheets with the optional paper feeder.

Brilliant, vivid colour output

Give your reports and presentations a more professional look. Cutting edge Fuji Xerox technology guarantees consistently beautiful documents for any business use.

Exceptionally bright colours

The DocuPrint C3290 FS uses environmentally-friendly Emulsion Aggregate-High Grade (EA-HG) toner which is markedly different from conventional grinded toners. EA-HG toner particles are chemically produced and exhibit greater uniformity in shape and size than conventional toners. The end result is printouts that exhibit finer line detail, higher overall image quality and more consistent toner coverage.



Sharper text and images

Fuji Xerox's own Direct Transfer Imaging System improves colour registration for crisp, sharp printouts. Machine maintenance is also reduced since there are less moving parts inside the printer engine that can fail.

More than just another four-function device. A complete office productivity solution.

Incorporating functions and top-level specifications normally found on devices costing much more, the DocuPrint C3290 FS provides you with a number of specialised features to simplify difficult and time-consuming tasks.

PRINT

Printer configuration

The built-in CentreWare Internet Services (IS) utility provides a convenient way to check printer status and configure settings via a web browser. Among other many tasks, CentreWare IS allows you to:

- Check the remaining volume of consumables and media
- Send printer information via e-mail to administrators
- Check the total number of pages printed
- Configure TCP/IP settings

Secure print

Use Secure Print when you want to print a confidential document. Secure Print allows a print job to be temporarily stored in the printer and can only be printed out after the appropriate user authentication is entered at the control panel.



Booklet print

Produce booklets using this function in conjunction with the built-in duplex printing capability.

Proof print

Check the first copy of a multi-copy print job, pausing printing of the remaining copies until after you have proofed the first.

SCAN

High-resolution colour scanning

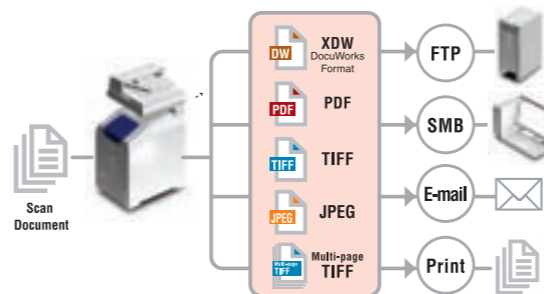
Scan a colour document quickly and easily at up to 36 ipm and 600 x 600 dpi optical (9600 dpi enhanced) resolution.

Scan Lock

Control access to the scanner by requiring a password entered at the control panel.

Scan to distribute

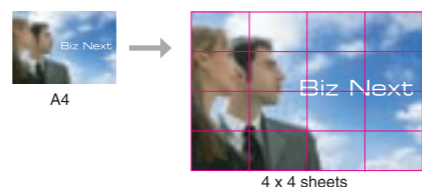
Scan a document once then distribute it to many recipients as hard copy, e-mail or as a file on a network server.



COPY

Poster copying

Enlarge and copy a document onto several sheets of media, then assemble the sheets to produce a poster.



ID Card copy

Reduce and copy multiple images of a document onto one piece of paper.



FAX

Junk fax

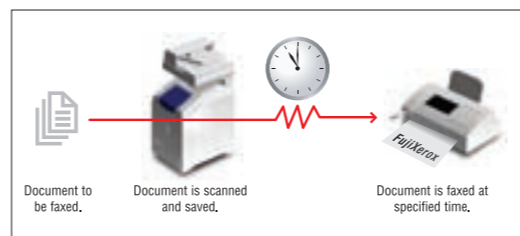
Eliminate reception of junk faxes by setting the fax to receive faxes only from persons listed in the address book.

Fax Lock

Control access to the fax by requiring a password entered at the control panel.

Delay fax

Scan and store documents in the memory, then schedule the documents to be faxed at a specified time. This is useful for reducing communication costs by taking advantage of lower off-peak hours telecom rates.



Smoother, more efficient document workflow

Improve the document flow in your office and speed work with intelligent functions such as Direct Fax, Scan to FTP/SMB, Scan to E-mail and SimpleMonitor. Find out more about Fuji Xerox's DocuWorks 6.2 document management software that helps you manage and access documents more easily than ever before.



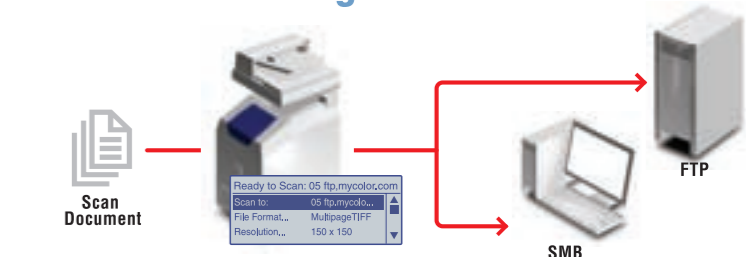
DocuPrint C3290 FS + Optional 550-sheet feeder and cabinet

Direct Fax



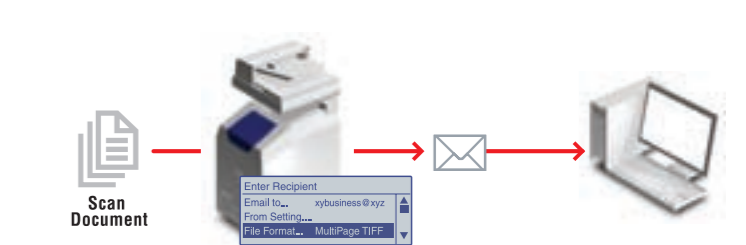
Send faxes directly from a PC without the need for additional software. Direct Fax is accessed via the printer driver making faxing quick and easy.

Network Scanning



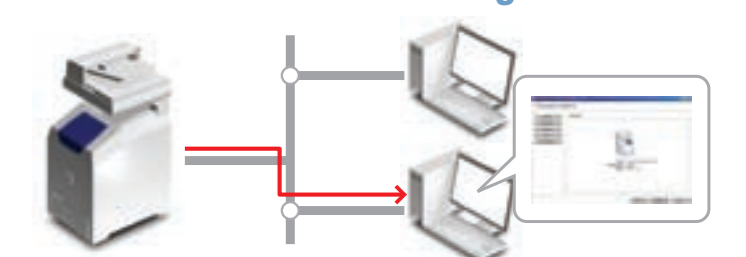
Scan and send documents directly to FTP servers and SMB servers without using a PC. For faster operation, you can store server addresses in the printer's address book.

Scan to E-mail



Scan and send documents by e-mail directly from the DocuPrint C3290 FS without using a PC.

Remote Printer Monitoring



The included SimpleMonitor software automatically displays printer and print job status. This saves time since you don't have to walk to the printer to check the status of print jobs.