

TELCO

Backmount Frames

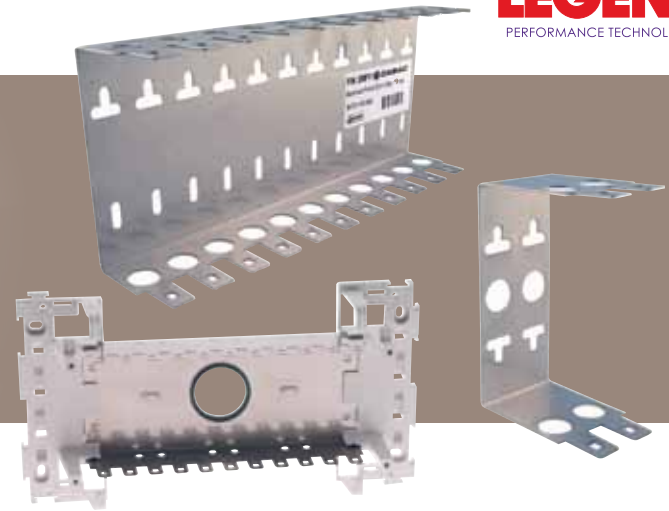
- Frames for internal use as a Campus Distributor, Building Distributor or Floor Distributor at or beyond the network boundary
- For mounting of S-Net modules
- Typically one label holder is used every 100 pairs

Backmount Frames 22mm deep - metal frame only

DMF2 2 Way

DMF3 3 Way

DMF4 4 Way



DMF6 6 Way

DMF11 11 Way

Jumperable Backmount Frames - including plastic Jumper Frames

DMFBM11 11 Way, 100 Pair

DMFBM27 27 Way, 250 Pair